

LX-MPX SERIES



Industrial Enclosure Display

DATASHEET

Description

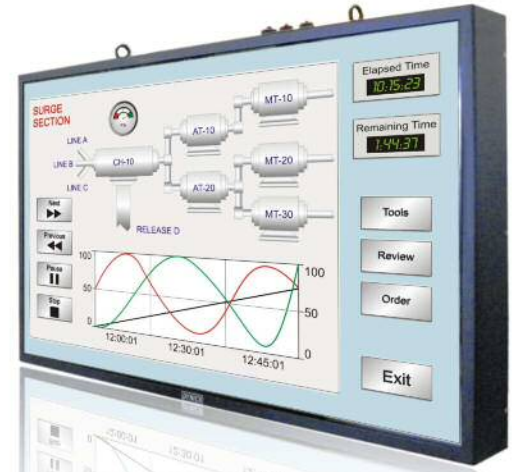
The LX-MPX Series is an industrial and cost effective enclosure designed with an Industrial Grade monitor (24/7 runtime operation) that utilizes a universal mounting system for ceiling/wall mount with industrial eyebolts welded into the metal structure. VESA Pattern: 400|600mm.

The enclosure is made of rugged steel with standard black powder coat finish powered by an integrated MPX computer for an all-in-one easy solution.

Key Features

- Rugged modular steel construction built to order. Sizes 32" to 70"
- Choice of Mini-ITX boards. High performance Solid State Drive
- High performance CPU options: INTEL iCore i3, i5 & i7 or AMD Mobile Fusion
- Heavy duty eyebolts ready for ceiling mounting
- Power Supply and Video Controls accessible from back, quick power disconnect.
- Integrated Computer or Monitor Only Options

Specifications



LX SERIES MONITOR DISPLAY

SPECS	LX32	LX42	LX46	LX55	LX65	LX65
Display Size	32"	42"	46"	55"	65"	70"
Resolution	SXGA 1366 x 768	SXGA 1920 x 1080	SXGA 1920 x 1080	SXGA 1920 x 1080	SXGA 1920 x 1080	SXGA 1920 x 1080
Viewing Angle	H: 178°, V: 178°	H: 176°, V: 176°	H: 176°, V: 176°	H: 178°, V: 178°	H: 178°, V: 178°	H: 178°, V: 178°
Contrast Ratio	3500:1	3500:1	3000:1	4000:1	3000:1	2000:1
Brightness	450 cd/m2	700 cd/m2	600 cd/m2	600 cd/m2	700 cd/m2	600 cd/m2
Power Consumption	Approx. 175W	Approx. 250W	Approx. 275W	Approx. 300W	Approx. 500W	Approx. 700W
Aspect Ratio	16:9	16:9	16:9	16:9	16:9	16:9
Grade	Industrial Rate (24/7 run-time) options					
Bulb Life	CCFL or LED Back Life estimated to be about 50,000 hours					
Interface Lens	4-6 mm Hardened Protective Glass OR Protective Lexan Lens					
Enclosure	Industrial enclosure black powder coated steel, VESA 400 600mm, custom colors available. Secure industrial eyebolts included for wall mounting					
Warranty	24 Month Limited Warranty. Extended warranty available, contact us for more details					

INTEGRATED FULL PC / MONITOR ONLY MODULE

System	Mini-ITX ATI Fusion: X1250 Graphics, up to 8Gb RAM, 1x 1Gb LAN, 2x USB, DVI Mini-ITX Intel CP100: Up to 8Gb DDR3, 2x USB, 1x Ethernet, DVI ProAV Video Controller: 1x DVI, 1x RS232
CPU	AMD Mobile Fusion 64, iCore i3, i5, i7
Operating System	Windows XP Pro, Windows XP Embedded, Windows 7, Windows 7 Embedded, ROMDOS
Memory	2Gb to 8Gb DDR2 or DDR3
Storage Drives	2.5" SATA Hard Drives / 2.5" Solid State Drives
Power Supply-PC	120~240 VAC 60/100 Watt Power Supply
Power Supply-Display	120~240 VAC 300 Watt Power Supply
Temperature	0°~50°C (32°~122°F) Operating / -25°~60°C (-4°~140°F) Non-Operating
Relative Humidity	20% ~ 80% Non-Condensing
Shock	10G Operating / 15G Non-Operating
Vibration	1.0G from 57-2000 Hz Operating / 2.5G from 57-2000 Hz Non-Operating
Warranty	24 Month Limited Warranty. Extended Warranty Available, Contact Us For More Details

Rev.2012-2.0

Visit us online at:
www.dynics.com

DYNICS

620 Technology Drive, Ann Arbor, MI 48108
 Ph. 734.677.6100 • Fax: 734-677-6105

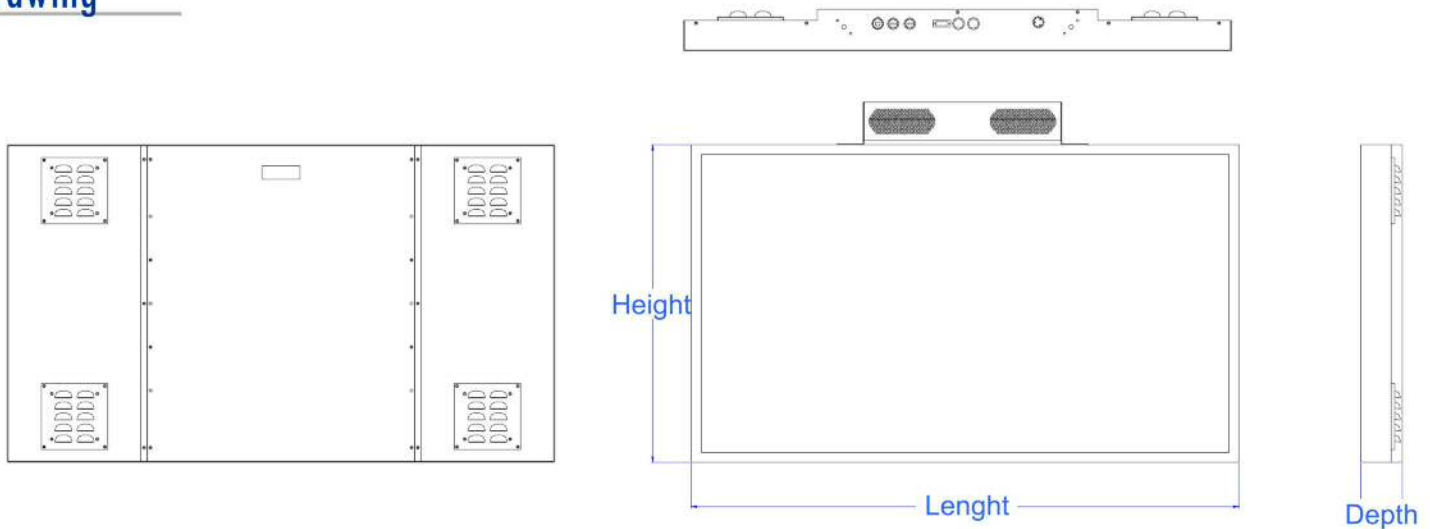


Dimensions

DIMENSIONS

	LX32	LX42	LX46	LX55	LX65	LX70
Height	21.75"	22.31"	24.30"	28.72"	34.00"	38.00"
Length	31.85	38.35"	41.89"	49.56"	63.75"	67.75"
Depth	4.25"	4.50"	5.00"	3.75"	7.08"	7.08"
Weight	55 lbs	85 bs	90 lbs	95 bs	225 lbs	350 lbs

Drawing



Back to Back System



Back to Back Bracket



Easy connectivity of soundbars with double sided system

Double Sided LX System

With the Back to Back bracket unit, two LX units can be paired up by allowing a combination of 1 IPC side and 1 monitor or 2 IPC sides for independent display messaging and sound. Skilled Trade Friendly installation. Heavy duty eyebolts ready for ceiling mounting.